

All illustrations from *It's fun to go out but...* published by The Child Accident Prevention Trust (CAPT) and illustrated by Fran Jordan.

# Guidance for Drivers

As a driver you can help to prevent accidents to children. Through simple measures like following speed limits, parking and reversing carefully, driving carefully in built up areas and being extra vigilant in areas around schools, you will help to protect children – and other pedestrians and road users.

As a careful driver you will also set a good example for any children who are travelling with you. This can have a positive effect on them as future drivers. And children are also very good at pointing out to their parents when someone else does something better/more carefully than them – so get parents on your side and encourage them to think child safety at all times.

The Highway Code contains a number of different sections about drivers and horse riders.

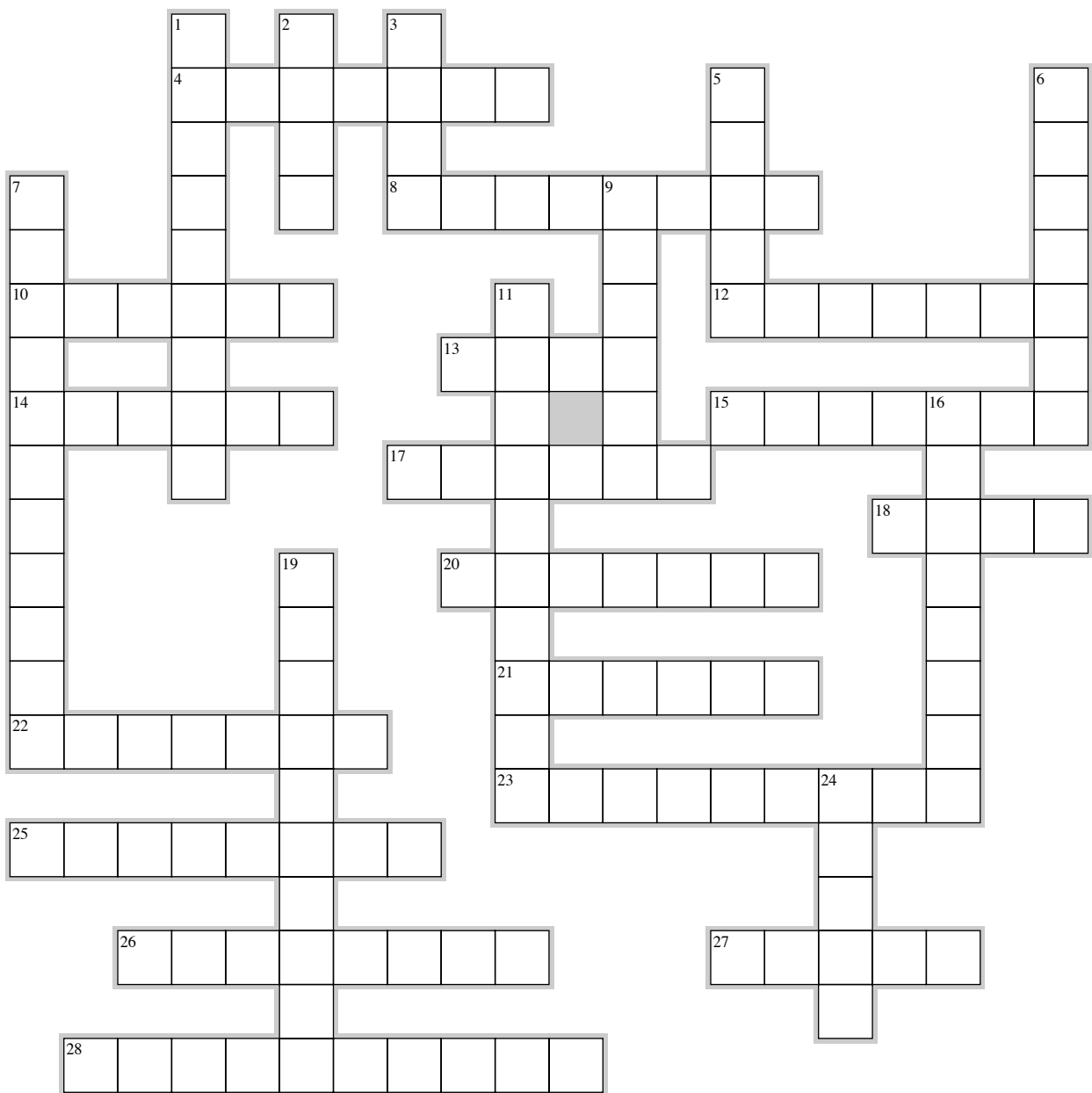
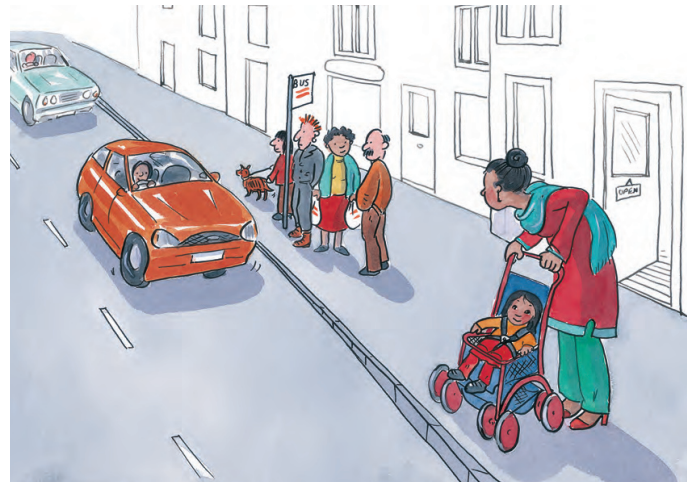
- 89–102:** Rules for drivers and motorcyclists
- 103–158:** General rules, techniques and advice for all drivers and riders. (Section 144–158 has some general advice which includes consideration for other road users, looking out for children, and for driving in built up areas)

- 159–203:** Using the road
- 204–225:** Road users requiring extra care
- 226–237:** Driving in adverse conditions
- 238–252:** Waiting and parking
- 253–273:** Motorways
- 274–287:** Breakdowns and incidents
- 288–307:** Road works, level crossings and tramways

We can't cover all these sections on this website, but in our crossword we have highlighted some areas to help you polish up your knowledge of safe driving.

# Drive-Safe Crossword

Clues on following page



EclipseCrossword.com

# Clues

## Across

4. Look out for these being led, driven or ridden on the roads and take extra care by keeping your speed down on narrow country roads and when driving round bends (7)
8. Many horse riders are children - and horses are unpredictable, however well ridden. Be prepared to do this or stop if a rider asks you (4) (4)
10. The presence of street lights usually means that this is the speed limit in mph (6)
12. This is something you must not do from a side road into a main road (7)
13. When children are getting out of a parked car, it is safest for them to do so on the side nearest to this (4)
14. In slow-moving traffic what you should try to do to the gap between you and the car in front, in order to help the traffic flow (6)
15. You should take extra care and go very slowly when you are driving near these - because of pedestrians and young cyclists (7)
17. You should never treat the speed limit as something to aim for. It isn't this! (6)
18. If the back of your car skids towards the left, you should turn the driver's wheel towards this direction (4)
20. On an icy road you should drive at slow speed and choose the ----- gear possible (7)
21. In the dark or in poor visibility be careful never to do this to cyclist, pedestrians and other road users, with your lights (6)
22. Along with eating and drinking and using your mobile, this is something you should not do while driving (7)
23. Road users who are visually impaired may carry one of these. If they are also deaf they may carry one of these with a red band on it (5) (4)
25. Be very aware of these road users when turning or changing direction or lane (8)

26. If you are turning into a road in your car, a pedestrian who has already started to cross is considered to have this (8)
27. Children and older pedestrians may not be able to judge this accurately (5)
28. In hot weather you should keep your car well ventilated so you don't feel this (10)

## Down

1. It may become this for pedestrians if you wave them across at a crossing, because other drivers may not stop (9)
2. Do this to your speed - never to a pedestrian or other road user (4)
3. When passing a cyclist, motorcyclist or horse rider you should allow the same amount of space you would allow for these (4)
5. Before you reach a downhill slope you should choose a ----- gear than normal, to help control your speed (5)
6. Never cut these when making a turn in your car (7)
7. Along with large vehicles, these usually need a greater distance to stop than cars - so remember to give them plenty of space (5) (6)
9. On a wet road you should increase the distance between your car and the car in front by at least this amount of extra space (6)
11. When you are reversing you should be looking mainly through this (4) (6)
16. You must never do this in a traffic calming area (8)
19. Before moving off, you should always check these by looking round (5) (5)
24. When this colour is flashing you must give way to any pedestrian already on the crossing (5)

Solutions are on the next page

